



# An Introduction to GR8 Global

Empowering teams through global  
diversification



# Agenda

- Who We Are
- Core Offerings
- Ancillary Services
- Next Steps

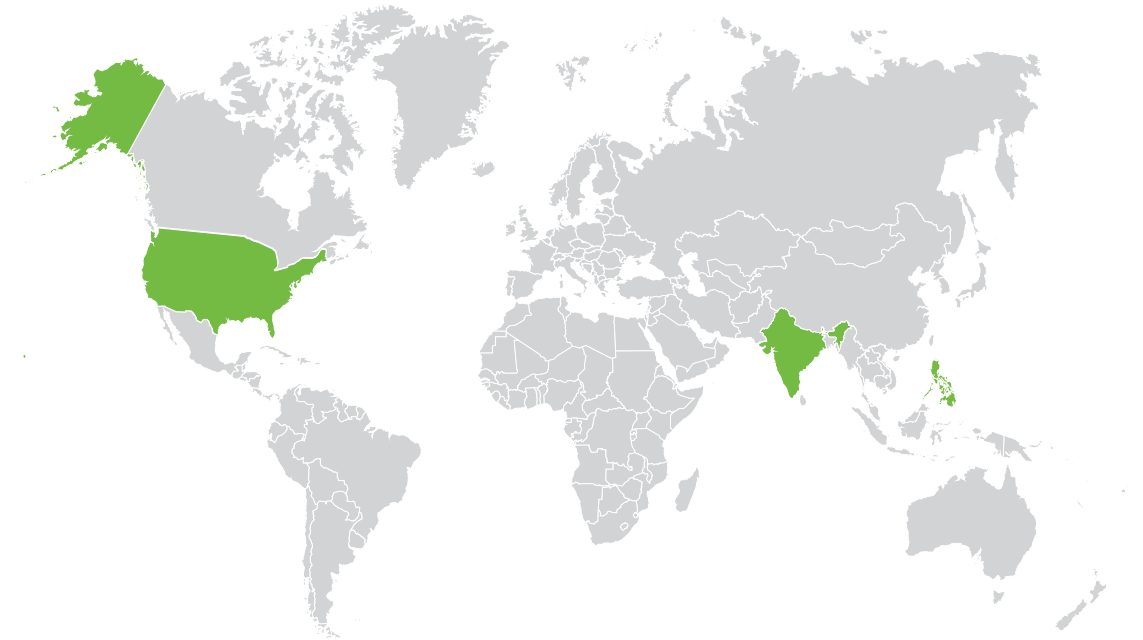


# Who We Are

GR8 Global is redefining offshore talent acquisition and delivering measurable cost savings for multiple industries.

Tax and Audit	Accounting
Billing	Payroll
TAS	Valuation
Resource Management	Robot Process Automation
Administration	Cost Segregation
IT Support	Proposal Generation

**300+** employees  
in the U.S., India, and the Philippines





# Mission | Vision | Values

## Mission

Be a preferred employer in our countries of operation

## Vision

Integrate and empower the world's best professionals into high-performing Global Capability Centers (GCCs) for organizations seeking global transformation

## Values

***“SEE the Future”***

**Service** – creating a meaningful impact on our professionals, clients, and communities

**Empowerment** – unlocking the potential of our professionals and clients

**Excellence** – delivering exceptional value through constant evolution and innovation

**Future Focused** – always looking toward the horizon



# Core Offerings

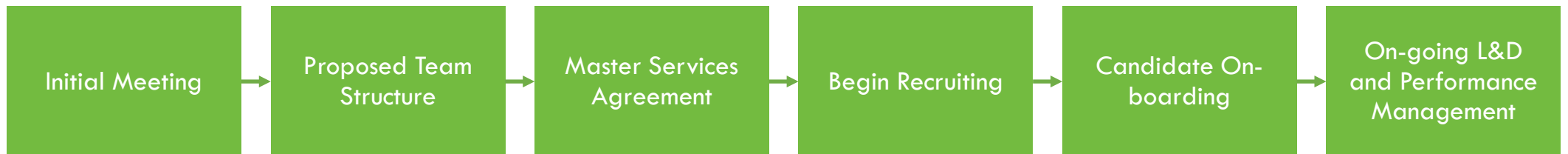


# Global Capabilities Center (GCC)

**Custom-built** teams, **dedicated** to your company, **integrated** into your culture, processes and resource allocation. GR8 Global serves as the employer of record for your offshore team members, handling items such as HR compliance, recruiting, payroll, benefits and IT hardware.

Our functional leadership team provides quality assurance/control, assists with learning & development and partners with you on performance management, while our global readiness and change management professionals share best practices to optimize utilization within your firm.

## The process:





# Most common question about the GCC

## GR8 Global's Technology and Cyber Security Highlights

- GR8 Global-owned computer hardware
- Centralized endpoint security, configuration and patch management
- Security Operations Center (SOC) providing 24/7 security monitoring, detection and response
- Enforced multi-factor authentication (MFA) for all employees
- Annual and ongoing cyber security awareness training required for all employees
- Each GR8 Global employee works only within a single client's computing environment
- Client data remains in client's computing environment
- GR8 Global employees required to comply with client's IT security, acceptable use, security awareness, etc. policies



# Build Operate Transfer (BOT)

Transfer-ready GCCs designed with the intent for an **eventual transition** of control and operations to your company. GR8 Global works to understand your long-term goals, then leverages our global expertise to build needed infrastructure, ensure the business is operating effectively and support a smooth transfer.

## Build

- Legal entity creation
- Statutory registrations
- Shareholder structure
- Organizational structure
- Location strategy
- Economic benefit zones
- Talent acquisition
- Vendor consultation
- Data privacy
- Trademarks / copyrights

## Operate

- Transfer pricing
- Import/export taxes
- Capitalization strategy
- Banking setup
- HR policies / procedures
- Global readiness
- Employee engagement
- Insurance
- Compliance
- Travel guidance / policies
- Training

## Transfer

- Change management
- Handing over systems, policies and procedures
- Transition support
- Training
- HR
- Finance
- IT support
- IT hardware
- Recruitment / screening
- Learning / development





# Ancillary Services



# Ancillary Services

## US Employment Readiness

- Live training and firm-based training
- Online and self-study content
- Level-based training solutions

## Human Resources & Recruiting

- Recruiting services
- HR policy / procedure development
- HR compliance consulting
- Job description creation

## IT Hardware

- In-country procurement
- Shipping / delivery
- Imaging / setup



# Next Steps

# Thank you.

For more information contact:

**Brett Loxterman**

+1 913-214-4338

Brett.Loxterman@Gr8Global.com

www.gr8global.com

**James DeWitt**

+1 913-278-0562

James.Dewitt@Gr8Global.com

www.gr8global.com

